

TREATMENT PERFORMANCE RESULTS

biocycle Ltd.

Unit 107, Baldoye Industrial Estate, Dublin 13, Ireland

EN 12566-3 Annex B

Results corresponding to EN 12566-3 and S.R. 66

PIA-SR66-1602-1022, shared itt

12,000 series

Fixed film process in concrete tank (initial type test) in combination with
McGrath Quarries concrete tanks

Nominal organic daily load	0.41 kg/d		
Nominal hydraulic daily load	1.60 m ³ /d		
Treatment efficiency (nominal sequences)		Efficiency	Effluent
		COD	92.1 % 50 mg/l
		BOD ₅	97.5 % 6 mg/l
		NH ₄ -N	85.6 % 4.2 mg/l
		SS	97.0 % 8 mg/l
Number of desludging	Not more than once		
Electrical consumption	2.0 kWh/d		

Performance tested by:

PIA – Prüfinstitut für Abwassertechnik GmbH

(PIA GmbH)

Hergenrather Weg 30

52074 Aachen, Germany

This document replaces neither the declaration
of performance nor the CE marking.



Notified Body
No.: 1739



Certified according to
ISO 9001:2008



Elmar Lancé

December 2016

TREATMENT PERFORMANCE RESULTS

McGrath Quarries

O'Callaghans Mills, Co. Clare, Ireland

EN 12566-3 Annex A and C

Results corresponding to EN 12566-3 and S.R. 66

PIA-SR66-1602-1022, shared itt

9,000 Series

Concrete tanks for SBR process in combination with
biocycle treatment kit

Material	Concrete
Watertightness	Pass
Structural behaviour (vertical load test)	Pass (also wet conditions)
Durability	Pass

Performance tested by:

PIA – Prüfinstitut für Abwassertechnik GmbH

(PIA GmbH)

Hergenrather Weg 30

52074 Aachen, Germany

This document replaces neither the declaration
of performance nor the CE marking.



Notified Body
No.: 1739



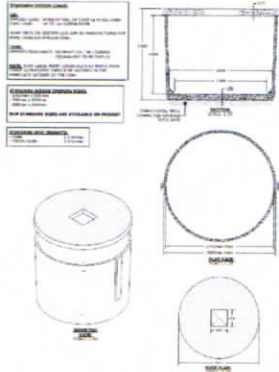
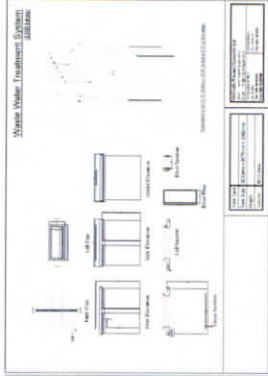
Certified according to
ISO 9001:2008



Elmar Lancé

December 2016

biocycle 12,000 series range shared ITT and its referring test reports:

Population equivalent (PE)	Drawing of model of the range	Watertightness (EN 12566-3 Annex A)	Treatment Efficiency (EN 12566-3 Annex B)	Structural Behaviour (EN 12566-3 Annex C)	Durability
Initial Type Test (ITT) 10		Pass PIA2007-0710-WD-1012	Pass PIA2008-065B10	Pass PIA2009-ST-AT0710-1012 For wet ground conditions, 1.48 m installation depth from inlet invert	Pass PIA2016-DH-1601-1003.01
Compared Tank 10		Pass PIA2013-WD-1304-1024	Pass Shared ITT conformity check according to S.R. 66:2015	Pass PIA2013-ST-BT-1304-1024b For wet ground conditions also, 0.80 m installation depth from inlet invert	Pass PIA2016-DH-1602-1022.01

STANDARD DESIGN LOADS:

LID:

IMPOSED LOAD: 10 kN/m² UDL OR 5,850 kg WHEEL LOAD
DEAD LOAD: UP TO 1m OVERBURDEN

HEAVY DUTY OR CUSTOM LIDS CAN BE MANUFACTURED FOR MORE ONEROUS APPLICATIONS.

TANK:

IMPOSED SURCHARGE: 10 kN/m² UDL (HA LOADING EQUIVALENT TO BS 5400-2)

NOTE: VERY LARGE POINT LOADS SUCH AS THOSE FROM CRANE OUTRIGGERS SHOULD BE AVOIDED IN THE IMMEDIATE VICINITY OF THE TANK

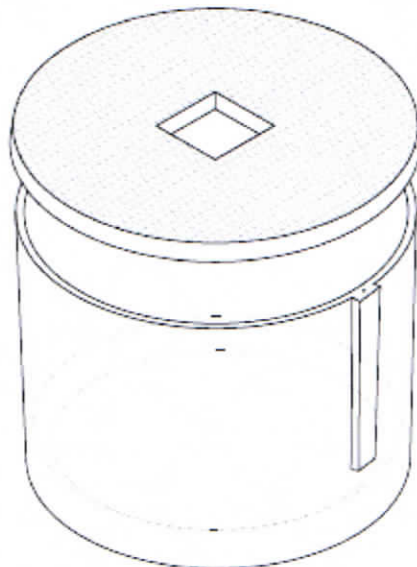
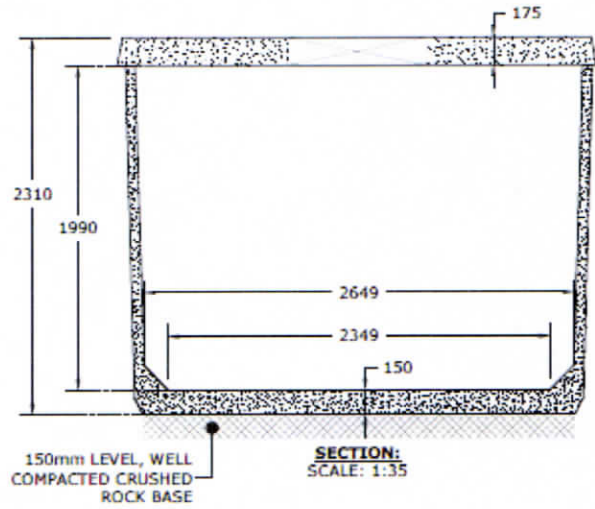
STANDARD ACCESS OPENING SIZES:

- 1400mm x 850mm
- 900mm x 600mm
- 600mm x 600mm

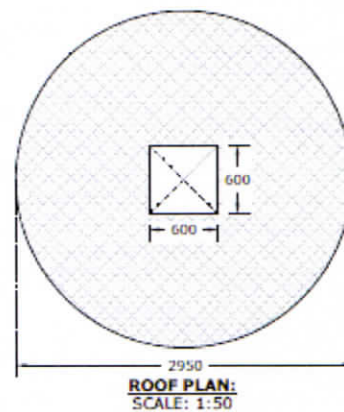
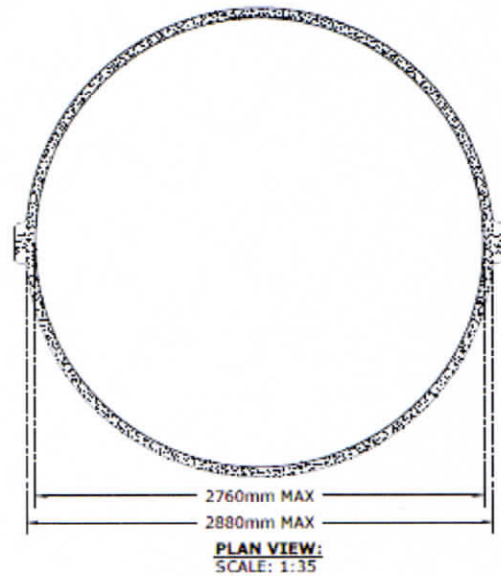
NON STANDARD SIZES ARE AVAILABLE ON REQUEST

STANDARD UNIT WEIGHTS:

- TANK: 5.5 tonnes
- COVER SLAB: 2.9 tonnes

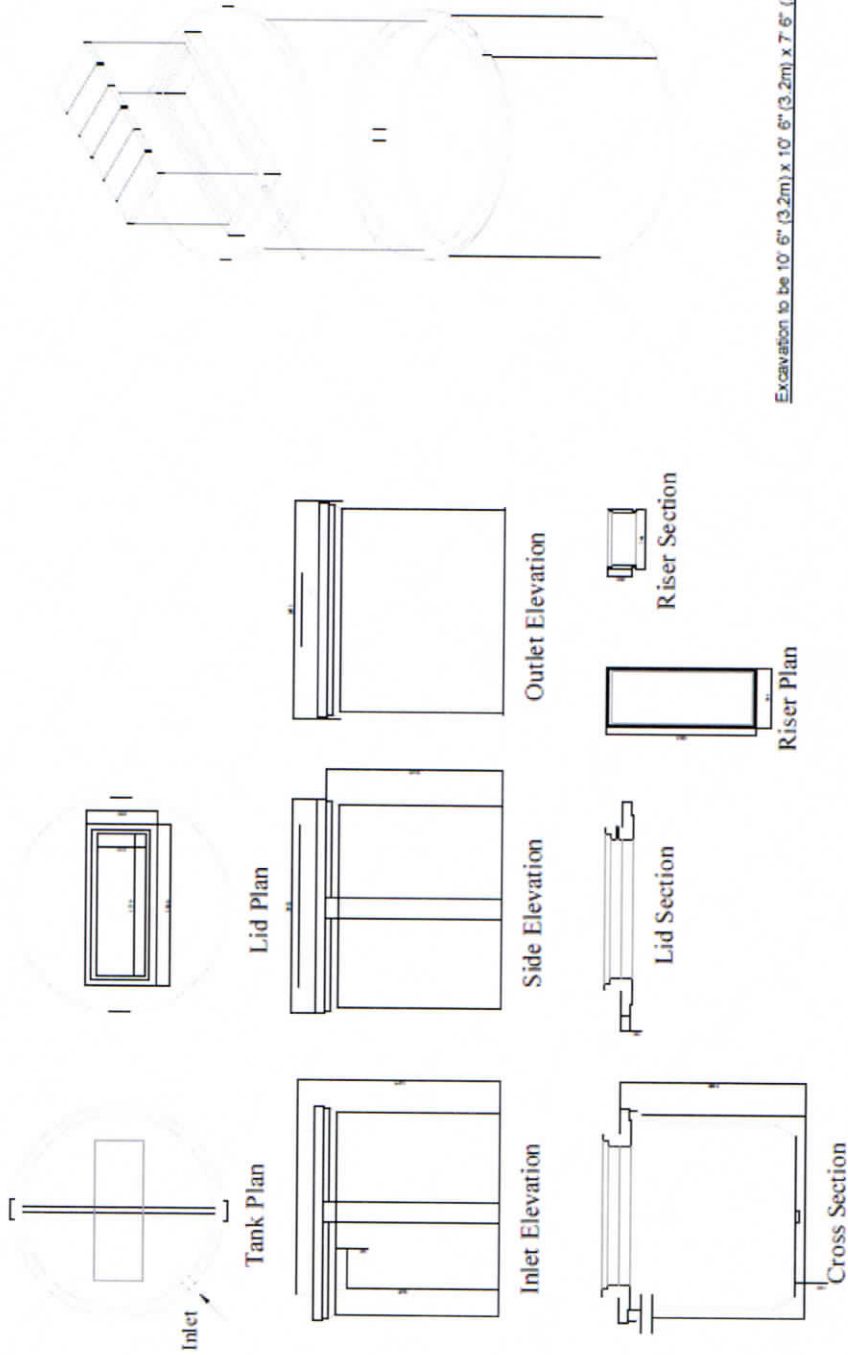


ISOMETRIC VIEW:
SCALE: 1:50



Waste Water Treatment System

(8200 Litres)



Tank Type	
Tank Size	2623mm x 2675mm x 2160mm
Height	
Volume	8200 liters

McGrath Precast Concrete Ltd.
 Web: www.mcgrathquarries.ie
 Email: info@mcgrathquarries.ie
 O'Callaghans Mills,
 Co. Clare
 Tel: 065 6035125
 Fax: 065 6035489
 Herberstown,
 Co. Limerick
 Tel: 061 305211